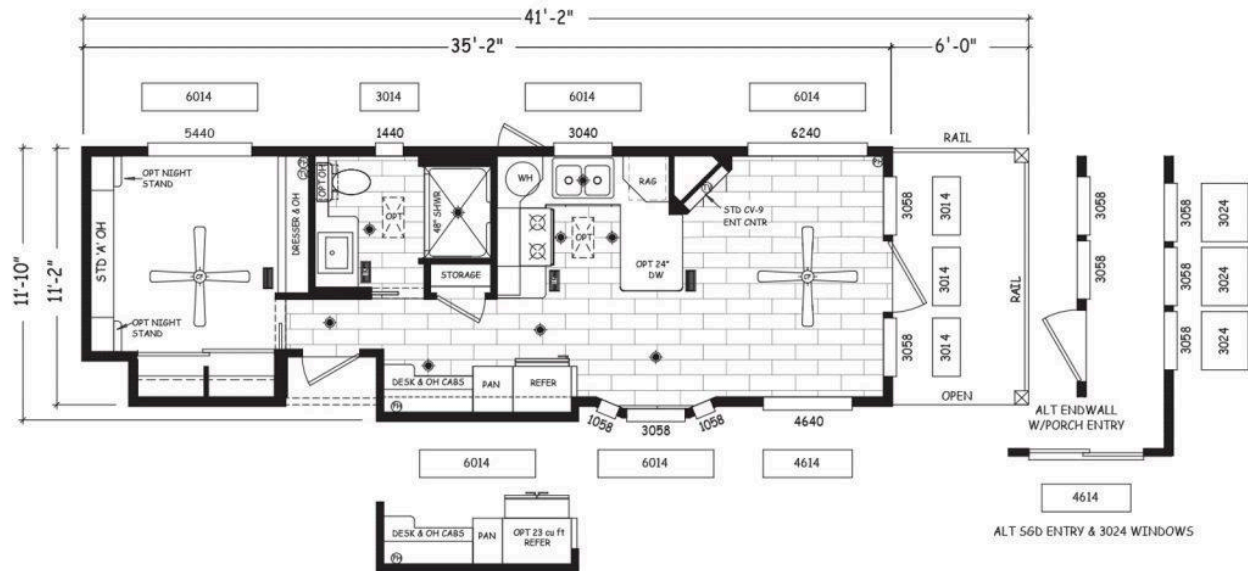


399 sqft | 1 Bed | 1 Bath

Reef - East



FEATURE: Front Porch | **KITCHEN STYLE:** U-Shaped Kitchen | **ENTRANCE:** Hall Exit



Energy Efficient



Quality Construction



Attractive Design



Affordable

INTERIOR

- Tape and textured walls throughout with rounded corners
- "WEDGE" 14'6 High Side with flat ceiling (stack windows are optional)
- Built-in CV- entertainment tv center (see print for choices)
- Samsung Smart TV with SONOS Beam Sound Bar
- White raised panel interior passage doors
- Choice of and upgraded Drapery Treatment w/Side Panels
- Linoleum throughout except the bedroom
- Shaw carpeting with padding and tack strip in bedroom
- White interior paint throughout
- 4" Recessed can lighting throughout

- Smoke detector and fire extinguisher
- LP Leak Gas Detector
- 'D' dining room bay (per floorplan)

KITCHEN

- 30" Propane gas range (natural gas is available upon request)
- 16 cu. ft. double door frost free refrigerator
- 30" Spacesaver microwave oven (white or black)
- Hardwood raised panel cabinet doors
- Hardwood cabinet face frames
- Finished cabinet bottoms
- Large cove molding on cabinet overheads
- Upgraded cabinet and drawer pulls throughout
- Drawers with double steel roller guides
- Laminate countertops with crescent edge throughout
- Choice of ceramic tile backsplash * Note: Full height tile backsplash is optional
- Residential grade and style "Kingston Brass" kitchen faucet
- Stainless steel kitchen sink
- Hidden cabinet door hinges
- Matching wood grain overhead cabinet interiors

BATHROOM

- Choice of 48" shower stall or 54" tub or shower (enclosure is optional)
- Residential grade and style "Kingston Brass" bathroom faucet
- Residential grade and style "Kingston Brass" tub diverter with shower head
- Recessed medicine cabinet on side or front of lavy
- 36" tall lavy cabinet with square drop-in lavy sink
- Laminate countertops with crescent edge throughout
- Choice of ceramic tile backsplash

BEDROOM

- Full width wardrobe with sliding doors and soffit above
- Single row of drawers under wardrobe sliding doors
- Dresser with overhead cabinet (per floorplan)
- Mirrored wardrobe doors x 1 set

EXTERIOR

- 6' Front porch with 36" white front door and 2 windows

- "R" Panel metal galvanized roof
- Painted fiber cement lap siding with OSB wood and building wrap
- Rear door with window, internal mini blind and deadbolt
- Exterior lights at each door
- White vinyl framed, low "E", dual glaze windows
- White aluminum framed double glaze sliding glass door
- Front eave overhang
- Exterior GFI receptacle by sliding glass door

PLUMBING, ELECTRICAL, HEATING & INSULATION

- PEX water lines with low point drain
- L. approved electrical devices throughout
- 50 amp exterior main panel service with 25' supply cord * Note: 100 Amp direct wire is available upon request
- 30 gallon fast recovery electric water heater with pan and exterior door
- Easy touch rocker light switches throughout
- R-14 fiberglass floor insulation
- R-13 fiberglass sidewall insulation
- R-28 cellulose blown insulation
- Black iron gas pipe ran to rear of unit
- Under sink waterline shut-off valves
- Interior water heater switch on 30 gallon electric water heater
- Pre-wire for ceiling fan in living room and bedroom
- Pre-wire for TV and phone jacks in living room and bedroom
- Dimmer switch in dining room with 3 -light chandelier

CONSTRUCTION

- Full I-beam chassis construction
- Transverse 2" x 6" floor joists
- Detachable hitch from main chassis
- Woven simplex underbelly material
- 8' x 12' high density floor decking
- 2" x 4" sidewalls 16" O.C.
- Pre-engineered scissor trusses 16" O.C.
- 8-strand wire prep
- 30 gauge steel strapping for truss to sidewall and floor to sidewall strength
- RVIA / ANSI 119.5 approved